



DC-直流轴流风扇 40x40x56mm

马达可选功能列表 (Available Functions)

1. 马达保护 (Moto protection)

AS

2. 信号输出 (Signal out put)

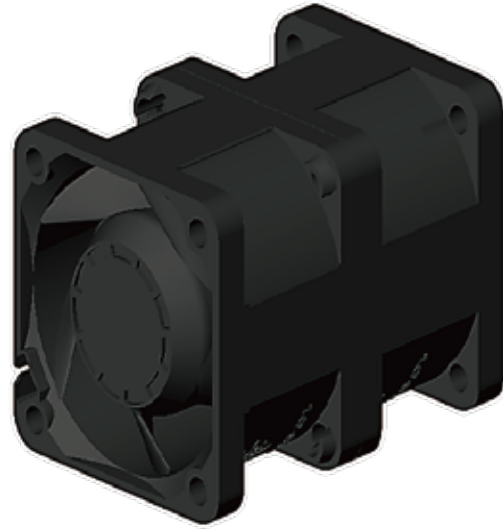
FG

RD

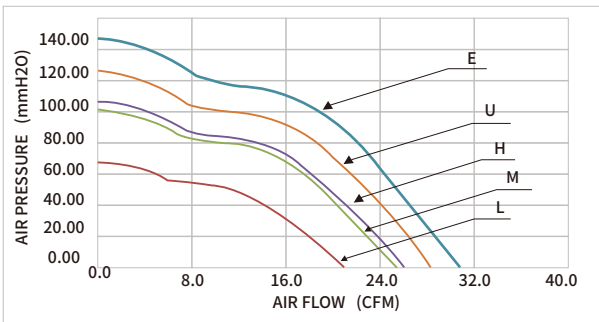
3. 调速方式 (Speed control mode)

PWM

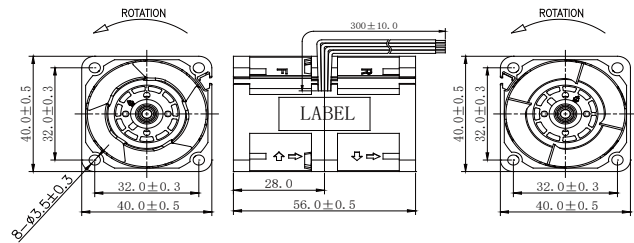
TC



风扇P-Q曲线 / Fan performance curve



尺寸图 / DIMENSIONS DRAWING



Model		Bearing	Rated Voltage	Startup Voltage	Current	Power	Speed	Air Flow		Static Pressure		Noise
型号		轴承	工作电压	启动电压	电流	功率	转速	风量		风压		噪音
Part NO.	Function	System	VDC	VDC	A	W	RPM	M ³ /min	CFM	mmH ₂ O	INH ₂ O	dBA
HDB0412EW	-A	Ball	12	6.0	1.65	19.80	IN:26000 OUT:23500	0.86	30.56	146.14	5.75	72.5
HDB0412UW	-A			6.0	1.40	16.80	IN:24500 OUT:22000	0.80	28.27	125.00	4.92	71.2
HDB0412HW	-A			6.0	1.12	14.40	IN:22500 OUT:20500	0.73	25.96	105.42	4.15	69.4
HDB0412MW	-A			6.0	1.00	12.00	IN:22000 OUT:18000	0.72	25.38	100.79	3.97	68.9
HDB0412LW	-A			6.0	0.70	8.40	IN:18000 OUT:15500	0.59	20.80	67.47	2.66	64.5
HDB0424EW	-A	Ball	24	18.0	0.87	20.79	IN:26000 OUT:23500	0.86	30.56	146.14	5.75	72.5
HDB0424UW	-A			18.0	0.75	17.98	IN:24500 OUT:22000	0.80	28.27	125.00	4.92	71.2
HDB0424HW	-A			18.0	0.64	15.26	IN:22500 OUT:20500	0.73	25.96	105.42	4.15	69.4
HDB0424MW	-A			18.0	0.53	12.66	IN:22000 OUT:18000	0.72	25.38	100.79	3.97	68.9
HDB0424LW	-A			18.0	0.37	8.82	IN:18000 OUT:15500	0.59	20.80	67.47	2.66	64.5