



防水防尘-风扇 60x60x38mm

马达可选功能列表 (Available Functions)

1. 马达保护 (Moto protection)

AS

2. 信号输出 (Signal out put)

FG

RD

3. 调速方式 (Speed control mode)

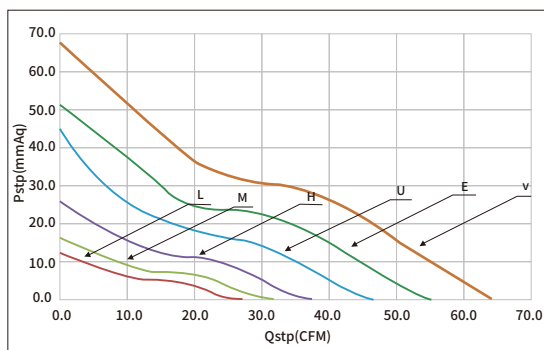
PWM



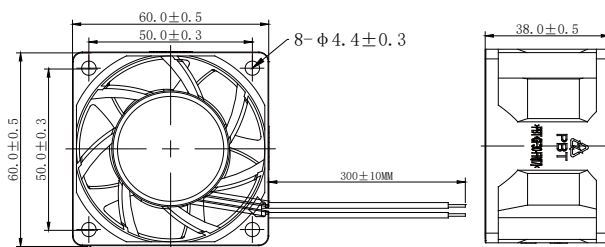
风扇单重: 110g (weight: 110g)



风扇P-Q曲线 / Fan performance curve



尺寸图 / DIMENSIONS DRAWING



Model	Bearing	Rated Voltage	Startup Voltage	Current	Power	Speed	Air Flow	Static Pressure	Noise			
型号	轴承	工作电压	启动电压	电流	功率	转速	风量	风压	噪音			
Part NO.	Function	System	VDC	VDC	A	W	M ³ /min	CFM	mmH ₂ O	INH ₂ O	dBA	
HDB0612VF	IP67	Ball	12	6.0	1.50	18.00	15000	1.81	64.00	67.47	2.66	63.0
HDB0612EF	IP67			6.0	1.20	14.40	13000	1.56	55.02	51.23	2.02	57.4
HDB0612UF	IP67			6.0	0.85	10.20	11000	1.31	46.35	44.70	1.41	53.0
HDB0612HF	IP67			6.0	0.60	7.20	9000	1.06	37.30	25.49	1.00	46.6
HDB0612MF	IP67			9.0	0.35	4.20	7500	0.90	31.74	16.04	0.63	42.8
HDB0612LF	IP67			9.0	0.30	3.60	6500	0.77	27.11	11.85	0.47	40.2
HDB0624VF	IP67	Ball	24	12.0	0.85	10.20	15000	1.81	64.00	67.47	2.66	63.0
HDB0624EF	IP67			12.0	0.60	7.20	13000	1.56	55.02	51.23	2.02	57.4
HDB0624UF	IP67			12.0	0.50	6.00	11000	1.31	46.35	44.70	1.76	53.0
HDB0624HF	IP67			12.0	0.35	4.20	9000	1.06	37.30	25.49	1.00	46.6
HDB0624MF	IP67			18.0	0.25	3.00	7500	0.90	31.74	16.04	0.63	42.8
HDB0624LF	IP67			18.0	0.20	2.40	6500	0.77	27.11	11.85	0.47	40.2